

MOD TW100



Light Efficiency:

24 Lumen/Watt

Light Quality:

CRI: 95.7

Color Temperature:

2702 K

Output: 1400 lm

Peak: 4537 cd

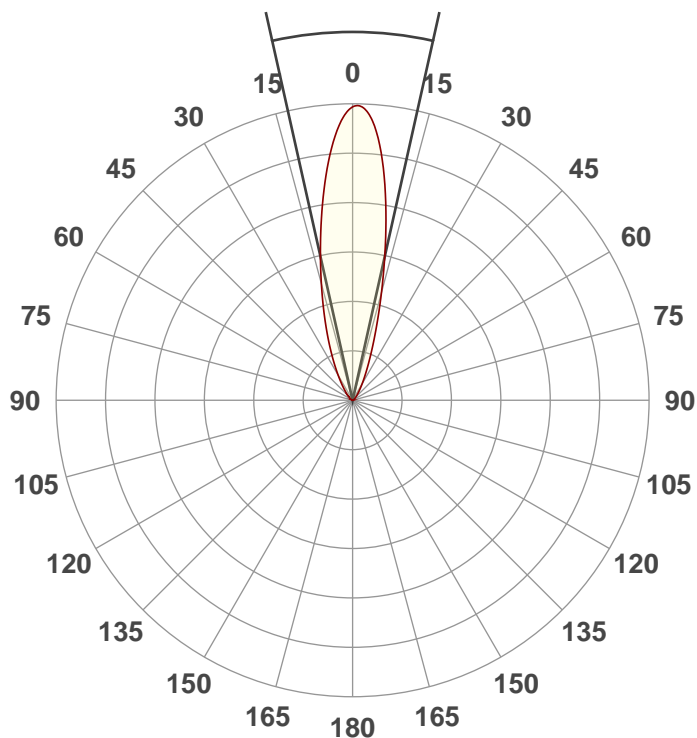
Power: 58.8 W

PF: 0.66



Beam Angle

25.2°



Test:

40Deg WW

Date:

11/26/2018

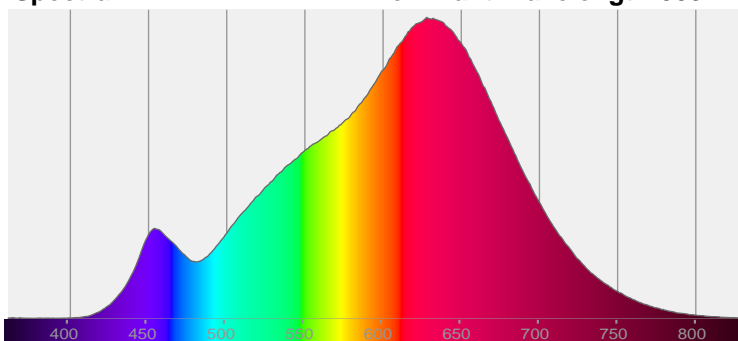
Note:



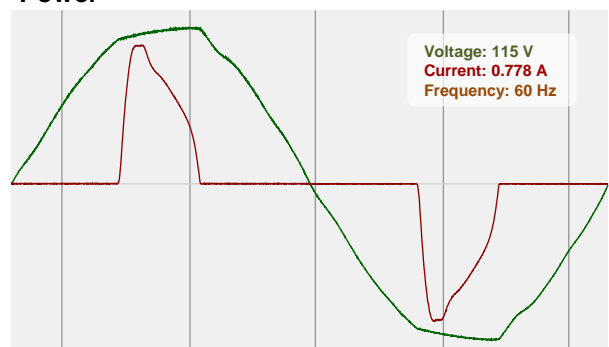
CIE 1931
x: 0.459
y: 0.408

Spectra

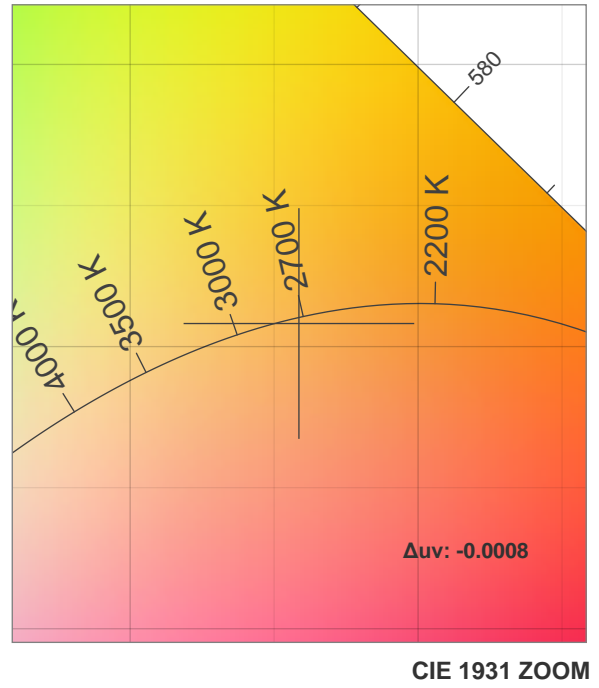
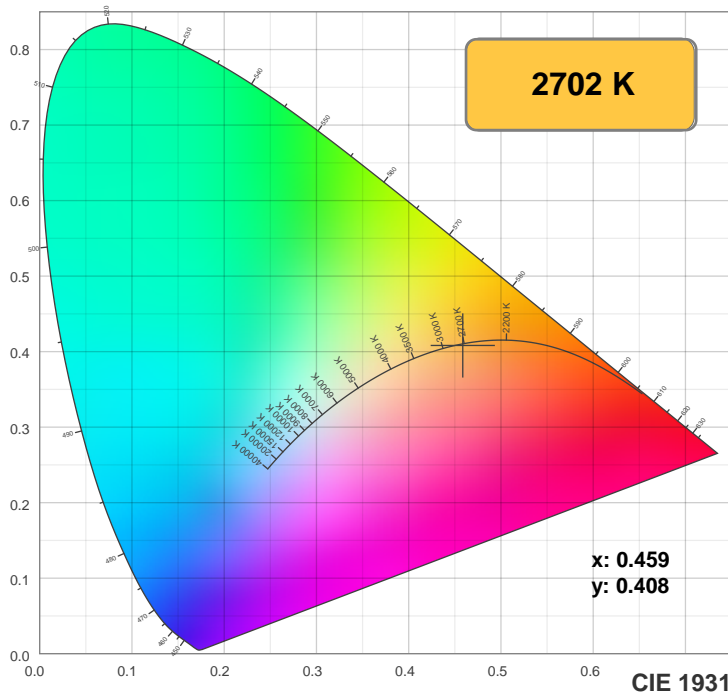
Dominant Wavelength: 585nm



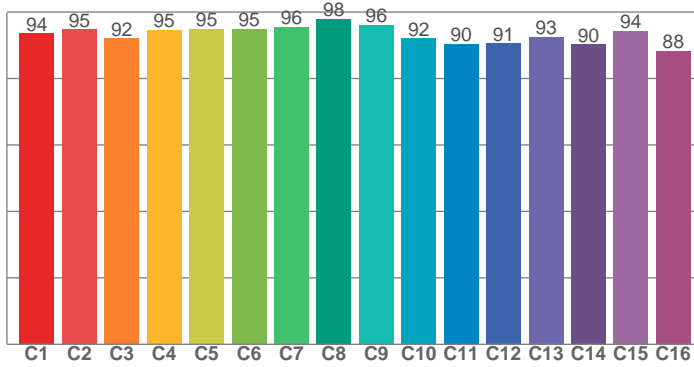
Power



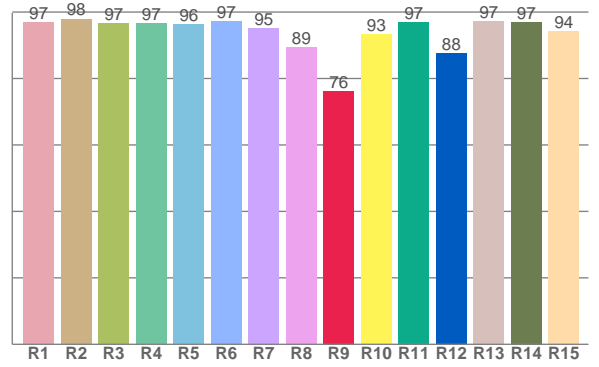
Color Details



TM30: 93.2



CRI: 95.7 (R1-R8)



CRI R values, only R1-R8 are used to calculate final CRI value

R1	R2	R3	R4	R5	R6	R7	R8	R9	R10	R11	R12	R13	R14	R15
96.8	98.0	96.7	96.6	96.2	97.3	95.0	89.4	76.2	93.3	97.0	87.7	97.3	97.0	94.2

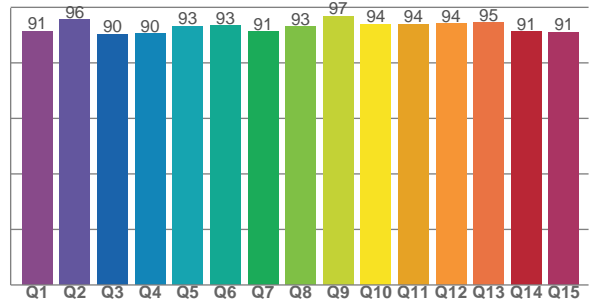
TM30 C values, 16 binned values out of total of 99 C values

C1	C2	C3	C4	C5	C6	C7	C8	C9	C10	C11	C12	C13	C14	C15	C16
93.6	94.7	92.0	94.6	94.9	94.9	95.6	97.9	96.2	92.1	90.5	90.6	92.6	90.2	94.3	88.4

CQS Q values

Q1	Q2	Q3	Q4	Q5	Q6	Q7	Q8	Q9	Q10	Q11	Q12	Q13	Q14	Q15
91.4	95.6	90.3	90.4	93.3	93.4	91.3	93.0	96.9	94.0	93.9	94.2	94.5	91.3	91.1

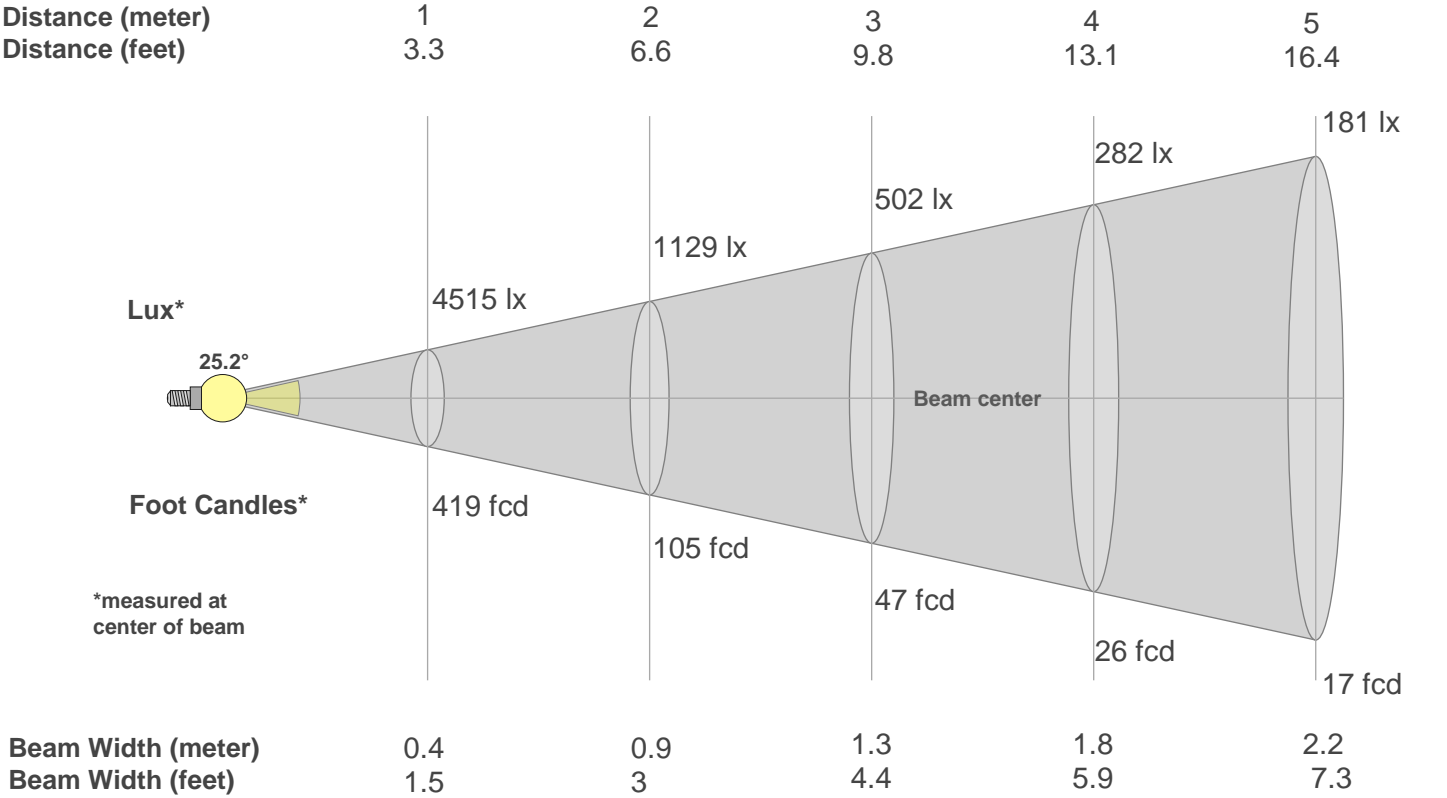
CQS: 92.6



Color Parameters

Color Temperature	Color Rendering Index	Red Component	Color Fidelity	Color Gamut	Color Quality Scale	Color Coordinate CIE 1931	Color Coordinate CIE 1931	Color Coordinate	Color Coordinate	Color Deviation from Black Body
CCT	CRI	CRI R9	TM30 Rf	TM30 Rg	CQS	x	y	u	v	Δuv
2702 K	95.7	76.2	93.2	100.7	92.6	0.459	0.408	0.263	0.351	-0.0008

Beam Details



Beam Intensities from 1-20m																				
m	1	2	3	4	5	6	7	8	9	10	11	12	13	14	15	16	17	18	19	20
ft	3.3	6.6	9.8	13.1	16.4	19.7	23	26.2	29.5	32.8	36.1	39.4	42.7	45.9	49.2	52.5	55.8	59.1	62.3	65.6
lx	4515	1129	502	282	181	125	92	71	56	45	37	31	27	23	20	18	16	14	13	11
fcd	419.4	104.9	46.6	26.2	16.8	11.7	8.6	6.6	5.2	4.2	3.5	2.9	2.5	2.1	1.9	1.6	1.5	1.3	1.2	1

Intensities in 0° C-plane																			
0°	2°	4°	6°	8°	10°	12°	14°	16°	18°	20°	22°	24°	26°	28°	30°	32°	34°	36°	38°
4515	4346	4038	3645	3213	2784	2383	2024	1706	1429	1191	987	813	667	546	445	363	296	241	198
100%	96%	89%	81%	71%	62%	53%	45%	38%	32%	26%	22%	18%	15%	12%	10%	8%	7%	5%	4%

Intensities in 90° C-plane																				
0°	2°	4°	6°	8°	10°	12°	14°	16°	18°	20°	22°	24°	26°	28°	30°	32°	34°	36°	38°	
4515	4346	4038	3645	3213	2784	2383	2024	1706	1429	1191	987	813	667	546	445	363	296	241	198	
100%	96%	89%	81%	71%	62%	53%	45%	38%	32%	26%	22%	18%	15%	12%	10%	8%	7%	5%	4%	

Intensities in 180° C-plane																				
0°	2°	4°	6°	8°	10°	12°	14°	16°	18°	20°	22°	24°	26°	28°	30°	32°	34°	36°	38°	
4515	4510	4321	3964	3489	2954	2423	1935	1523	1188	928	727	575	457	366	295	240	196	161	133	
100%	100%	96%	88%	77%	65%	54%	43%	34%	26%	21%	16%	13%	10%	8%	7%	5%	4%	4%	3%	

Intensities in 270° C-plane																				
0°	2°	4°	6°	8°	10°	12°	14°	16°	18°	20°	22°	24°	26°	28°	30°	32°	34°	36°	38°	
4515	4510	4321	3964	3489	2954	2423	1935	1523	1188	928	727	575	457	366	295	240	196	161	133	
100%	100%	96%	88%	77%	65%	54%	43%	34%	26%	21%	16%	13%	10%	8%	7%	5%	4%	4%	3%	

Beam Angle 50%	Field Angle 10%	Cutoff Angle 2,5%	Intensity Ratio in 120° Cone	Intensity Ratio in 90° Cone
25.2°	55.9°	83.5°	98.7%	94.1%